



WORKFORCE STRENGTH



OUTDOOR PROTECTION

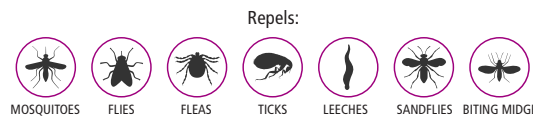


NEW HEAVY DUTY PACK designed to meet tough environments

Extra strong can designed for durability in tough workplace environments with a tropical strength protection for up to 6 hour protection.



150g Aerosol Spray



LABEL INSTRUCTIONS

DIRECTIONS FOR USE

Hold can upright and spray all exposed skin in a sweeping motion from a distance of 15-20cm. Do not spray towards eyes or mouth. To apply to face, spray on hands and rub on. Do not apply to eyes, mouth or babies hands.

NOT TO BE USED FOR ANY OTHER PURPOSE, OR IN ANY MANNER, CONTRARY TO THIS LABEL UNLESS AUTHORISED.

SAFETY PRECAUTIONS

For external use only. If rash or irritation occurs, discontinue use. If swallowed, seek medical advice. Do not spray towards eyes or mouth. Do not apply to eyes, mouth or babies hands. Do not spray near food and food utensils. Avoid contact with spectacle frames, soft plastics or synthetic fibres, timber fittings and furniture.

DEET WARNING: May be dangerous, particularly to children, if used in large amounts on the skin, clothes, or bedding, or on large areas of the body, especially if you keep using it for a long time.

FIRST AID: If poisoning occurs, contact a doctor or Poisons Information Centre. Phone Australia 13 11 26, New Zealand 0800 764 766.

STORAGE & DISPOSAL

KEEP OUT OF REACH OF CHILDREN. PRESSURISED DISPENSER. Keep in an upright position, in a cool place out of the sun. Dispose of can by putting in garbage or leaving it at an appropriate metal recycling point. PROTECT FROM SUNLIGHT AND DO NOT EXPOSE TO TEMPERATURES EXCEEDING 50°C. DO NOT PUNCTURE OR INCINERATE CAN EVEN WHEN EMPTY. EXTREMELY FLAMMABLE. DO NOT

SPRAY ON A NAKED FLAME OR INCANDESCENT MATERIAL. KEEP AWAY FROM SOURCES OF IGNITION – NO SMOKING.

PROPELLANT: Hydrocarbon

BE SAFE WITH DEET

- + Do not allow children under 10 years of age to apply repellent themselves.
- + Do not apply to young children's hands or around eyes and mouth.
- + Do not breathe in, swallow, or get into the eyes.
- + Do not put repellent on wounds or broken skin.
- + For sensitive skins, test product for any skin irritation on a small area of skin first. If irritation and rash develops, discontinue use and seek medical advice.

GENERAL SAFETY PRECAUTIONS

- + Over-spray may make surfaces slippery.
- + Do not use aerosol packs that are distorted or out of shape, as they may have been weakened by heat.

ABOUT THIS PRODUCT

- + High Strength 6 Hour mosquito protection.
- + High performance strength with 19.5% DEET to actively repel biting insects and proven for longer lasting protection.
- + Extra strength pack with an Epon lining provides for industrial tough environments with higher durability to reduce the risk of puncture or can failure.
- + 5 Years Shelf Life with Quality assets to get the last spray.
- + Qualified to effectively repel mosquitoes, flies, sand-flies, fleas, leeches and biting midge in a variety of environments.
- + 2 in 1 with repellent and Antiseptic to assist in preventing infection and inflammation.
- + Aussie Owned & Made.
- + CFC Free
- + PETA Friendly, NOT tested on animals medication.
- + Verified by Independent Laboratory Tests.
- + Refer to www.rid.com.au for MSDS Information.

